

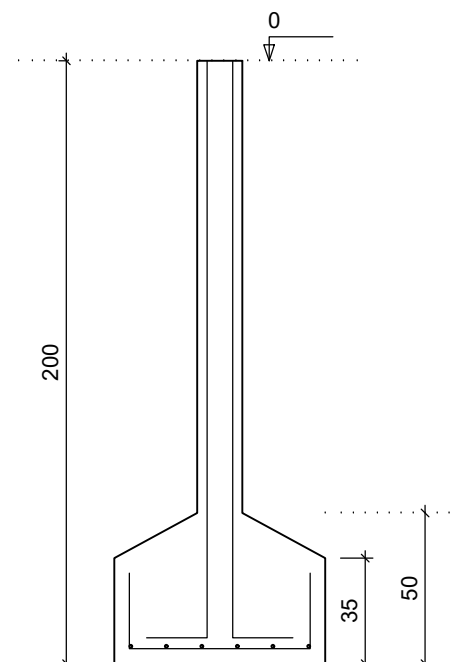
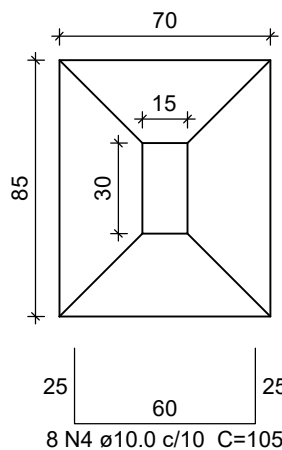
BALDRAME - L1  
ESC 1:20

15  
30  
25  
10  
N2

190  
20  
-200  
165  
17 N1 c/10

6 N3 ø10.0 C=208  
17 N1 ø5.0 C=82  
17 N2 ø5.0 C=25

CORTE  
ESC 1:25



BALDRAME - L1  
ESC 1:20

15  
30  
10  
25  
N2

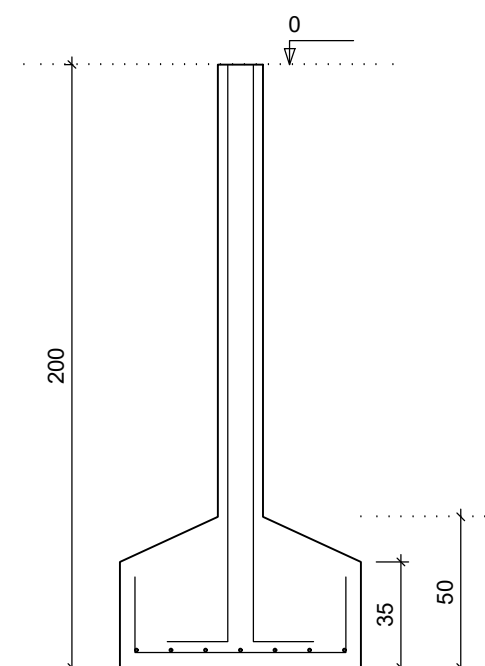
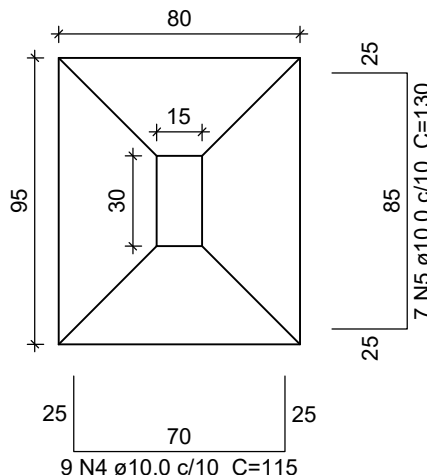
17 N1 ø5.0 C=82  
17 N2 ø5.0 C=25

190  
6 N3 ø10.0 C=208  
20

0  
200  
A-A

ESC 1:25  
165  
17 N1 ø7.0

CORTE  
ESC 1:25



ELEMENTO	AÇO	N	DIAM	Q	UNIT (cm)	C.TOTAL (cm)
6xS1	CA60	1	5,0	102	82	8360
	CA60	2	5,0	102	25	2550
	CA60	3	5,0	36	208	7488
	CA50	4	10,0	36	105	5400
2xS2	CA60	5	10,0	36	120	4320
	CA60	1	5,0	34	82	2788
	CA60	2	5,0	34	25	850
2xS9	CA60	3	10,0	12	208	2496
	CA50	4	10,0	18	115	2070
	CA50	5	10,0	14	130	1820
	CA60	1	5,0	34	82	2788
2xS10	CA60	2	5,0	34	25	850
	CA50	3	10,0	12	208	2496
	CA60	4	10,0	28	115	3220
	CA60	1	5,0	34	82	2788
S13	CA60	2	5,0	34	25	850
	CA50	4	10,0	14	130	1820
	CA50	5	10,0	18	115	2070
	CA60	2	5,0	11	82	902
	CA60	3	10,0	9	105	945
	CA50	4	10,0	6	135	810
	CA50	5	12,5	6	207	1242

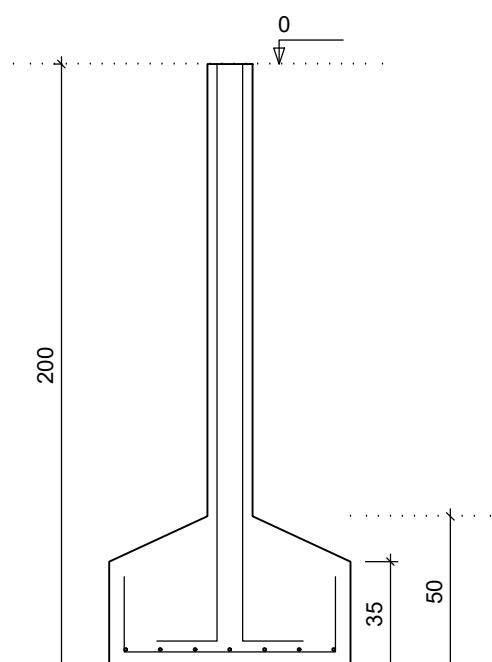
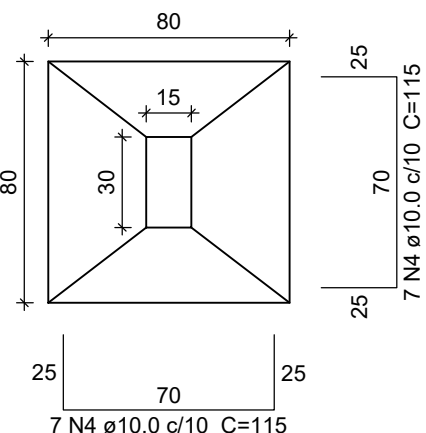
AÇO	DIAM	C.TOTAL (m)	PESO (kg)
CA50	10.0	371	228.7
	12.5	12.5	12
CA60	5.0	230.1	35.5
PESO TOTAL			
CA50	240.6		
CA60	35.5		

Vol. de concreto total (C-25) = 4.75 m<sup>3</sup>  
Área de forma total = 38.24 m<sup>2</sup>

BALDRAME - L1  
ESC 1:20

15  
30  
10  
25  
N2  
17 N1  $\phi$ 5.0 C=82  
17 N2  $\phi$ 5.0 C=25  
190  
6 N3  $\phi$ 10.0 C=208  
20  
165  
17 N1 c/10  
-200  
ESC 1:25

CORTE  
ESC 1:25



BALDRAME - L1  
ESC 1:20

15  
30

10  
25

190  
185

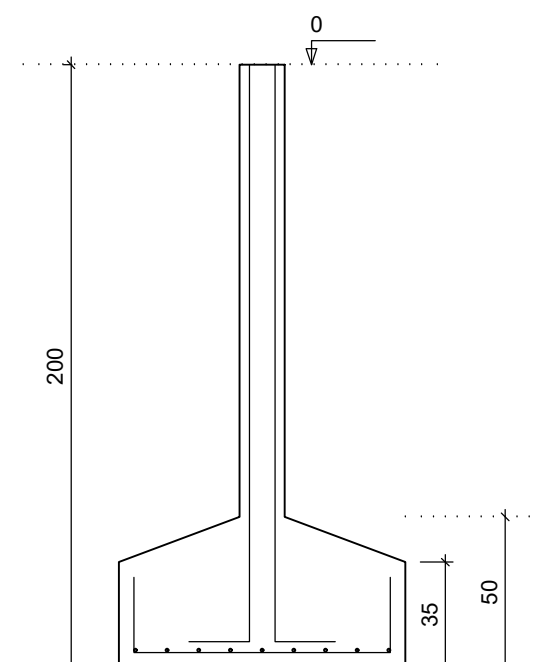
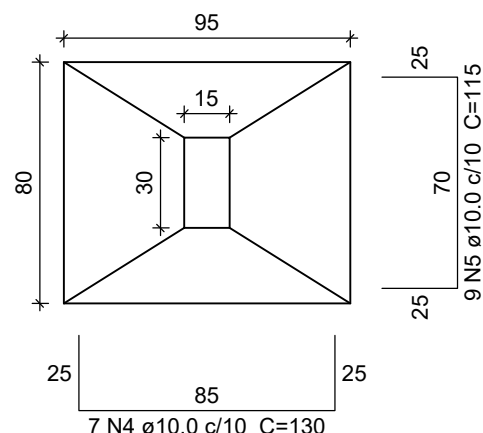
17 N1 ø5.0 C=82  
17 N2 ø5.0 C=25

6 N3 ø10.0 C=208

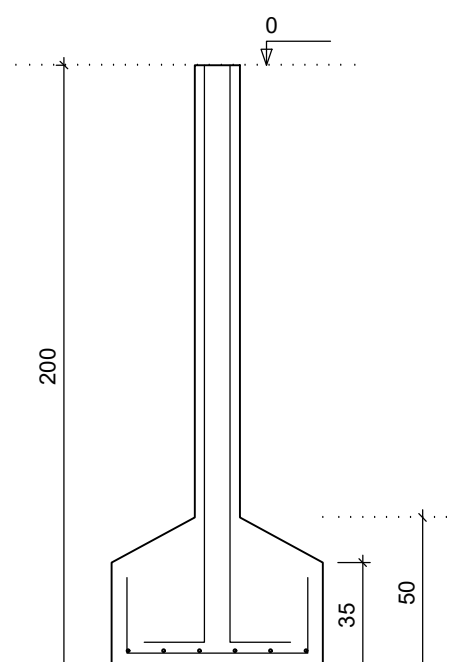
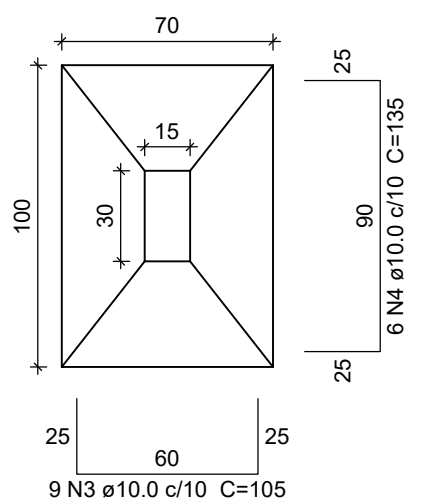
20  
100  
200

ESC 125

CORTE  
ESC 1:25



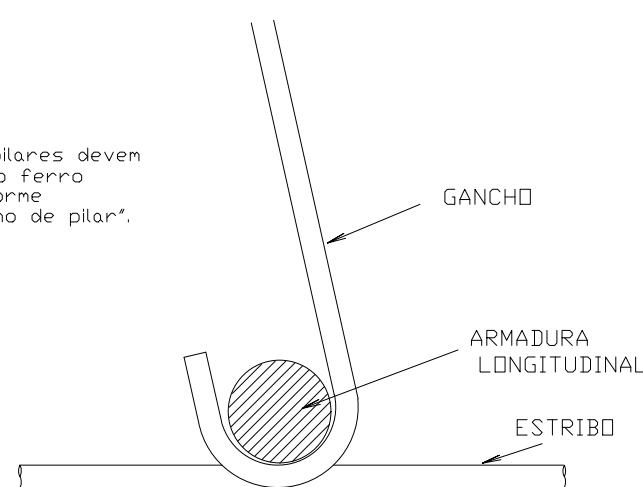
CORTE  
ESC 1:25



BALDRAME - L1  
ESC 1:20

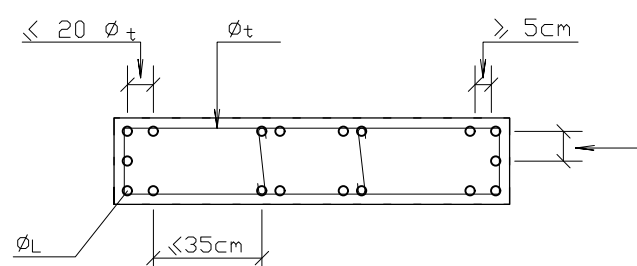
15  
30  
10  
25  
N2  
190  
6 NS ø12.5 C=207  
20  
-200  
165  
11 N1 ø5.0 C=82  
11 N2 ø5.0 C=25  
ESC 1:25

NOTAS:  
Os ganchos dos pilares deverão envolver apenas o ferro longitudinal, conforme "detalhe do gancho de pilar".



☐ ARMADURA LONGITUDINAL CONTINUA  
☐ ARMADURA LONGITUDINAL ENGARRAFADA  
☒ ARMADURA LONGITUDINAL MORRE  
☐ ARMADURA LONGITUDINAL NASCE

DETALHE DE POSICIONAMENTO DAS  
ARMADURAS LONGITUDINAIS EM PILARES  
SEM ESCALA (ALTERNATIVO)



 <div style="display: inline-block; text-align: left;"> <b>CHAPADA DOS GUIMARÃES</b>          PREFEITURA       </div>		
CNPJ: 03507530/0001-19      Endereço: R. Tiradentes, 190, Chapada dos Guimarães - MT, 78195-000		
		
OBRA: <b>PROJETOS DE REFORMA E AMPLIAÇÃO DAS ESCOLAS NO MUNICÍPIO DE CHAPADA DOS GUIMARÃES-MT</b>		
PROJETO DE FUNDAÇÃO		
LOCALIZAÇÃO: <b>E.E. CEL. RAFAEL DE SIQUEIRA</b> <b>RUA SANTO ANTONIO, N°. 350 - CENTRO - CHAPADA DOS GUIMARÃES-MT</b>		
AUTOR DO PROJETO:  <div style="text-align: center;">   <b>Eng. Yuri Bispo Neves Vuolo</b>  <b>CREA-MT : MT047573</b> </div>	RESP. TÉCNICO:  <div style="border: 1px solid black; height: 150px;"></div>	
ASSUNTO: <div style="border: 1px solid black; padding: 10px; text-align: center;"> <b>DETALHES</b> </div>		
ESCALA: <b>COMO INDICADO</b>	UNIDADE: <b>CENTÍMETRO</b>	DATA: <b>MARÇO /2021</b>
ÁREA CONSTRUIDA:	ÁREA COBERTA:	ÁREA DO LOTE:

FOLHA N°  
2/4